



AI Assisted Digital Pathology

Tomáš Brázdil

founder

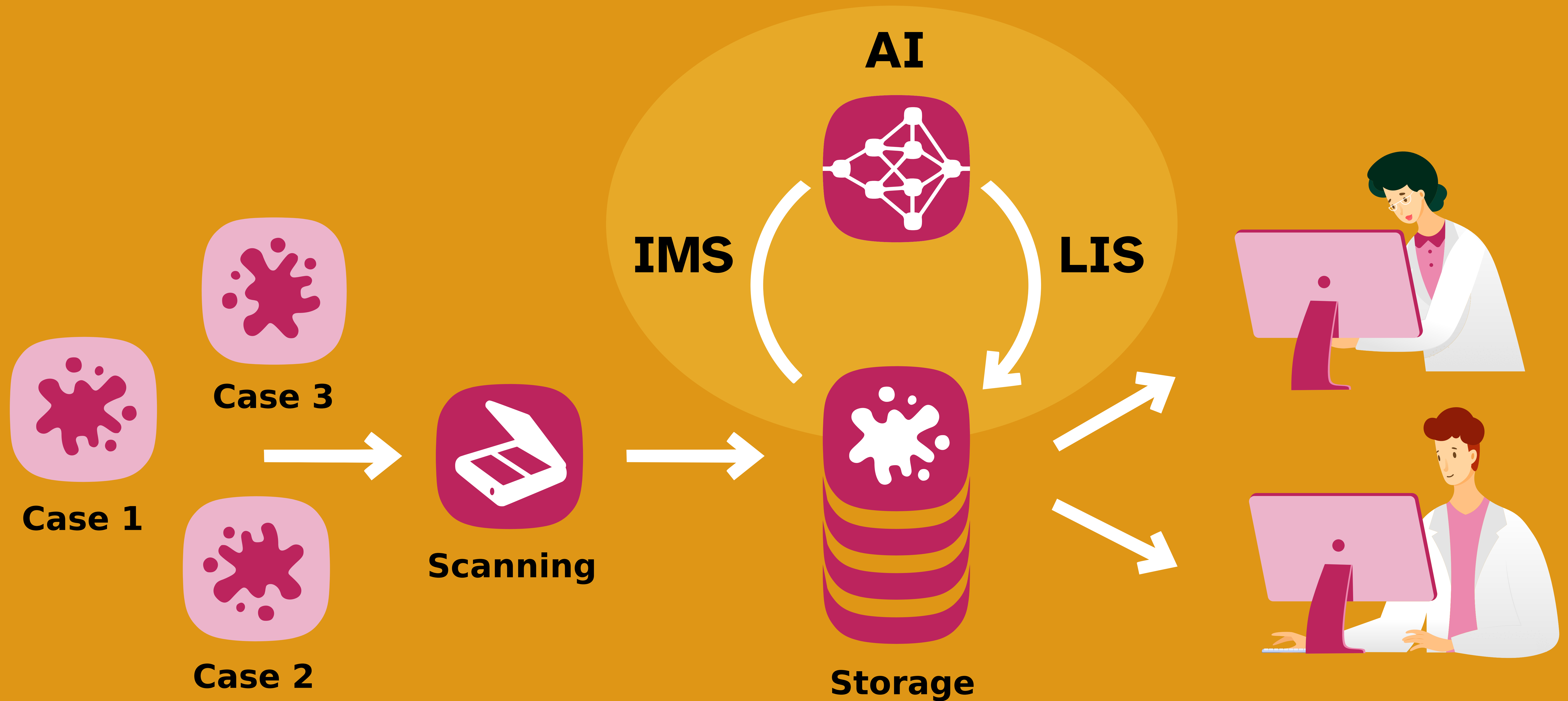
rationai.fi.muni.cz





RationAI

Our Position in Digital Pathology

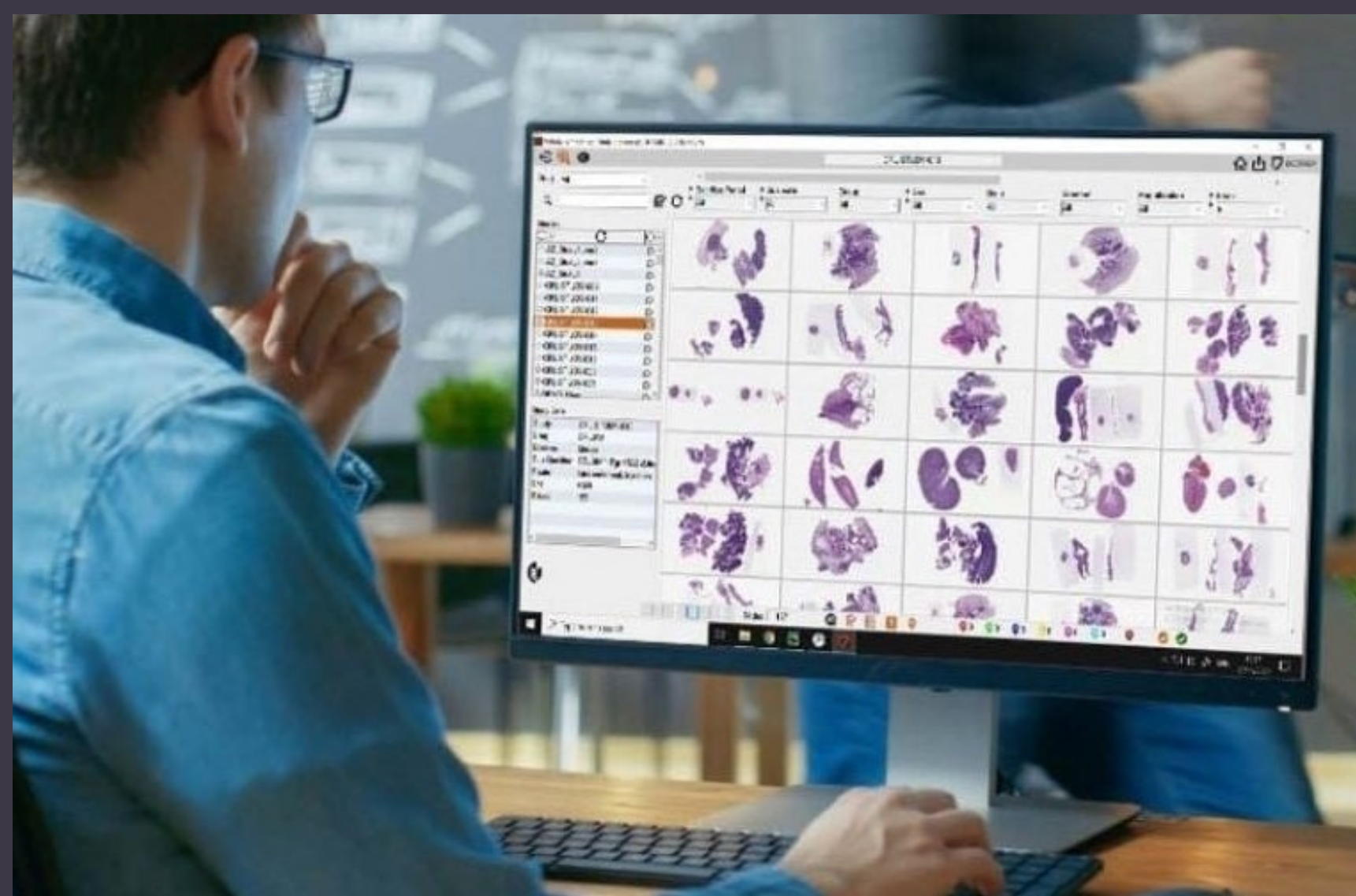




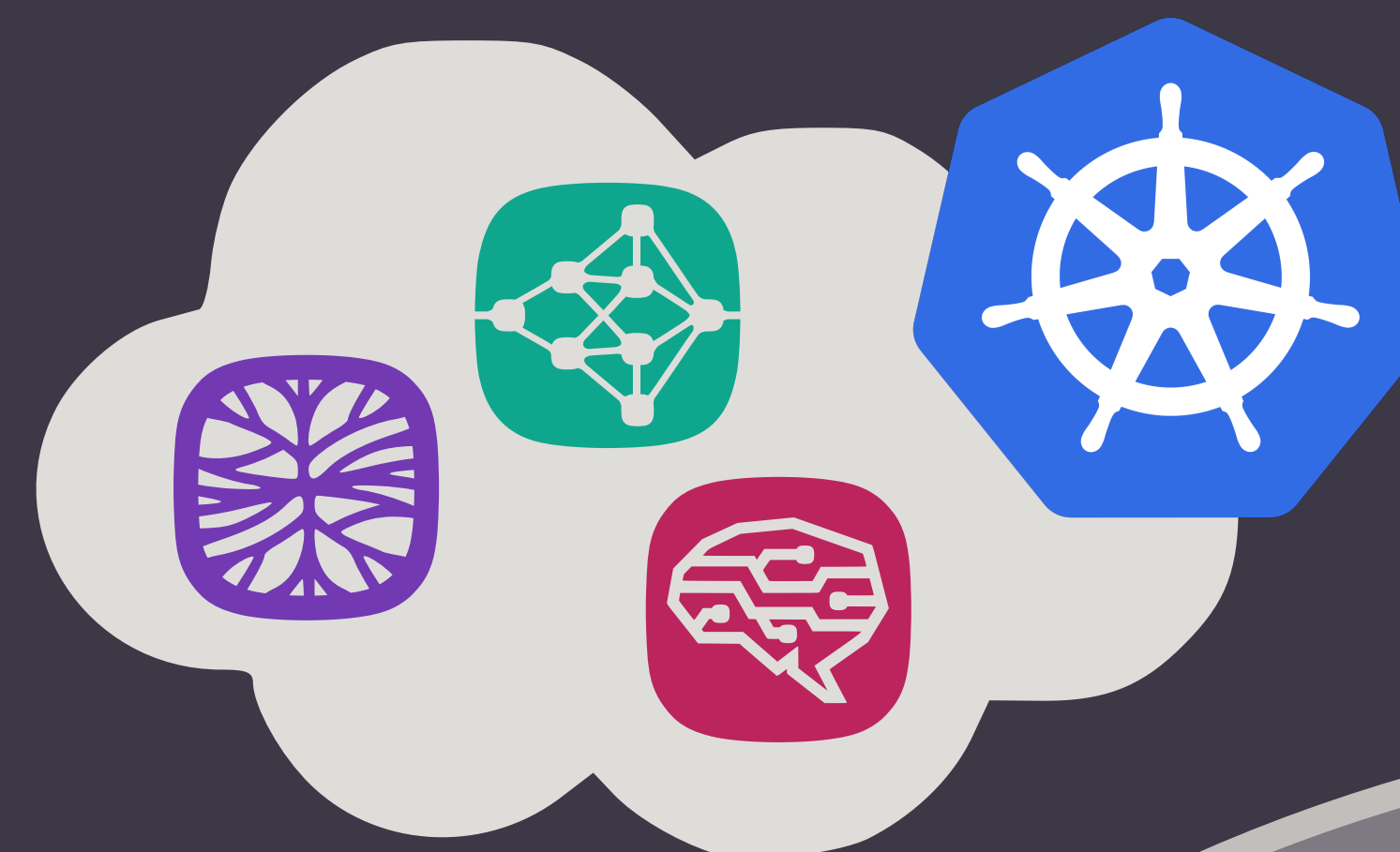
RationAI

Prostate Cancer Detector

Deployed at Masaryk Memorial Cancer Institute



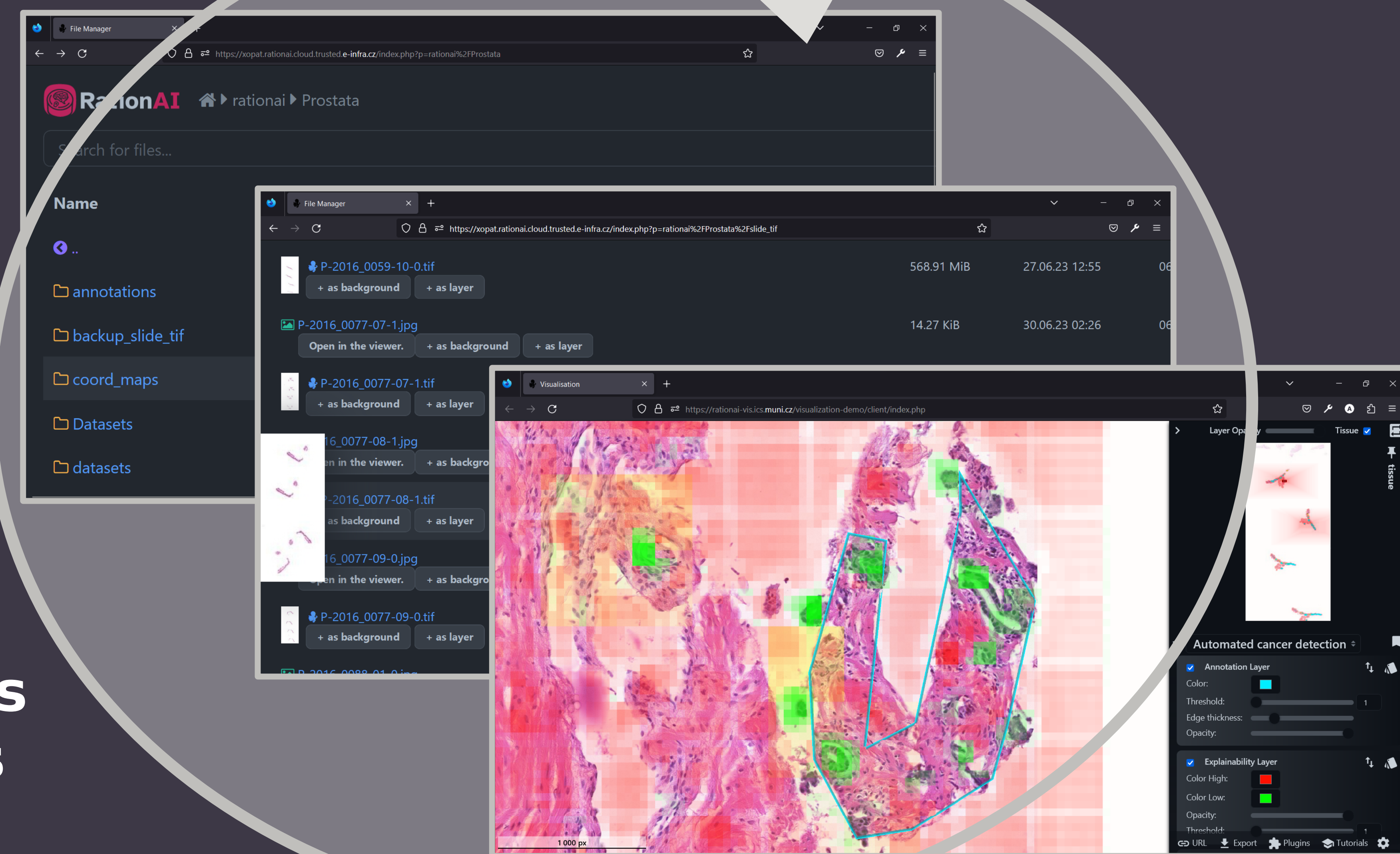
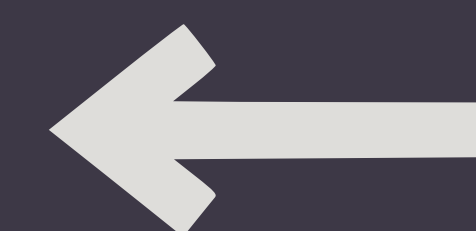
WSI upload



AI processing



Analysis results



rationai.fi.muni.cz

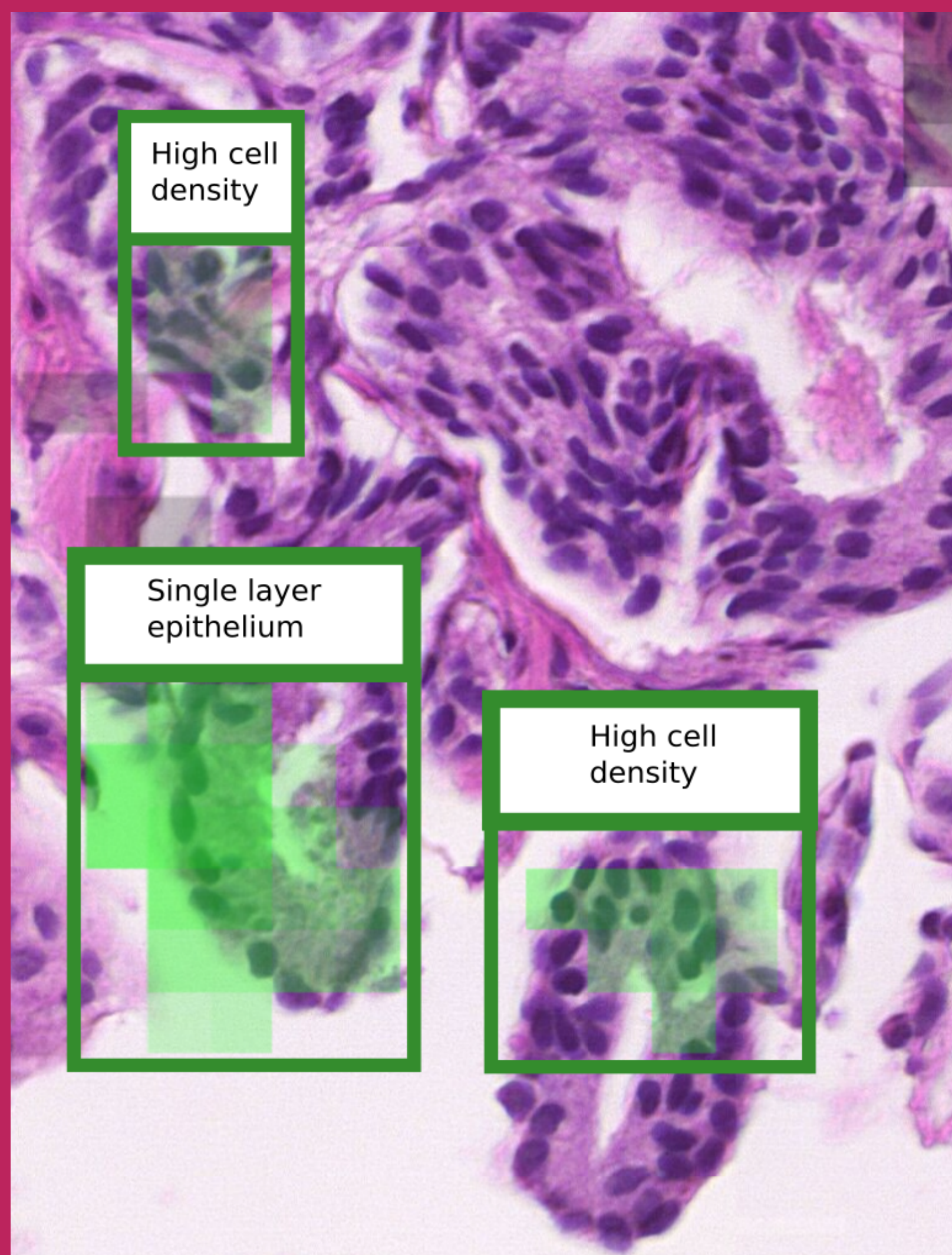


RationAI

Notable Features

■ Explainable

Model agnostic **explainable AI**
Mapping to **biological features**



■ Flexible

Rapid development & deployment
Prostate cancer detector deployed
at MMCI

Efficient training pipelines

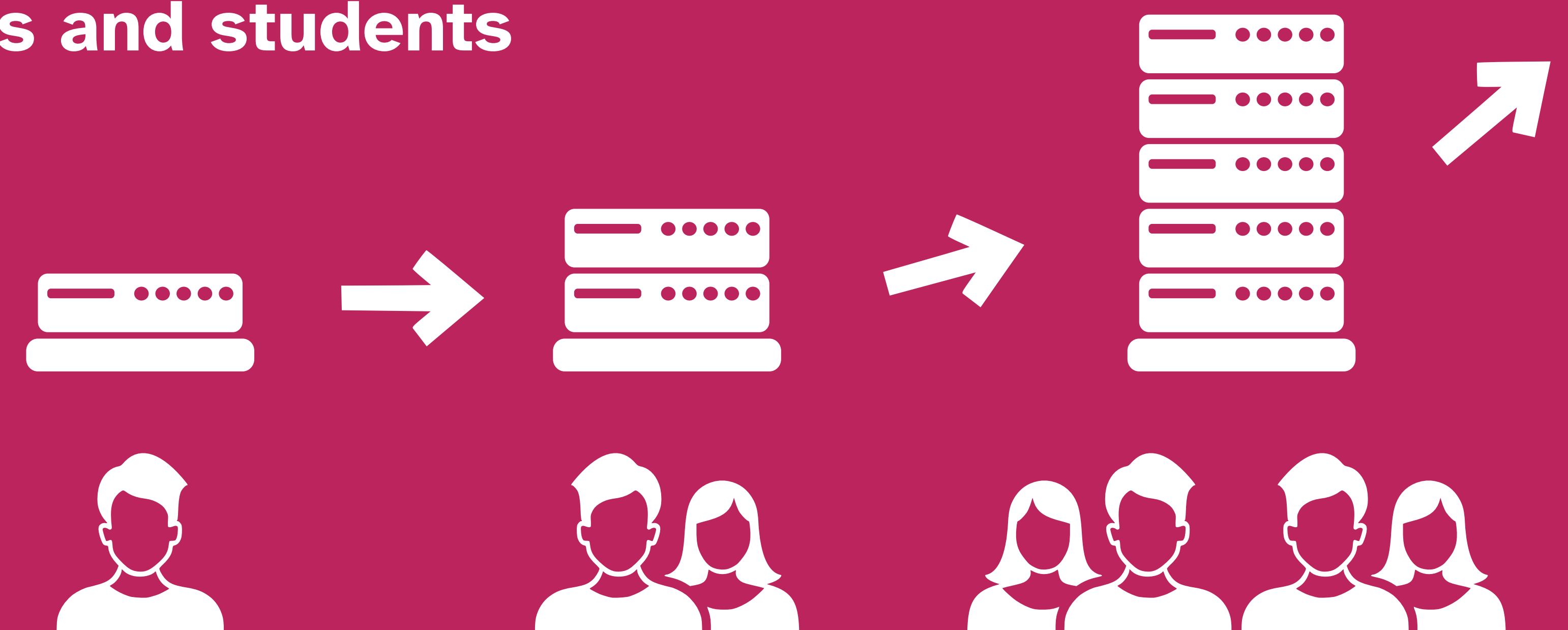
Developed specifically for digital
pathology

Large pool of **AI experts and students**
at FI MUNI

■ Fast and Scalable

Experts and students
in big data and cloud
infrastructures

Backed by **National Cloud
eInfrastructure**





- Research group in **AI assisted digital pathology**

- Approx. 20 team members at

- **Masaryk University**

- Computer science, powerful **computing facilities**,
limitless supply of **talented interns**

- **Masaryk Memorial Cancer Institute**

- National Oncology Center, **top oncology**
in Czech republic

- Collaborating with **Medical University Graz**

- Large pathology department, **huge biobank**



MUNI

MO
U Masarykův
onkologický
ústav

M
Med Uni
Graz