

# 1 MD and clustering results

This document contains detailed results from the performed MD simulations of DNA triplets. The calculated set of parameters and the measurements on real structures were used to establish groups of structurally isomorphic triplets. Figure 1 serves as a visual explanation of the parameters and their labels used in this document.

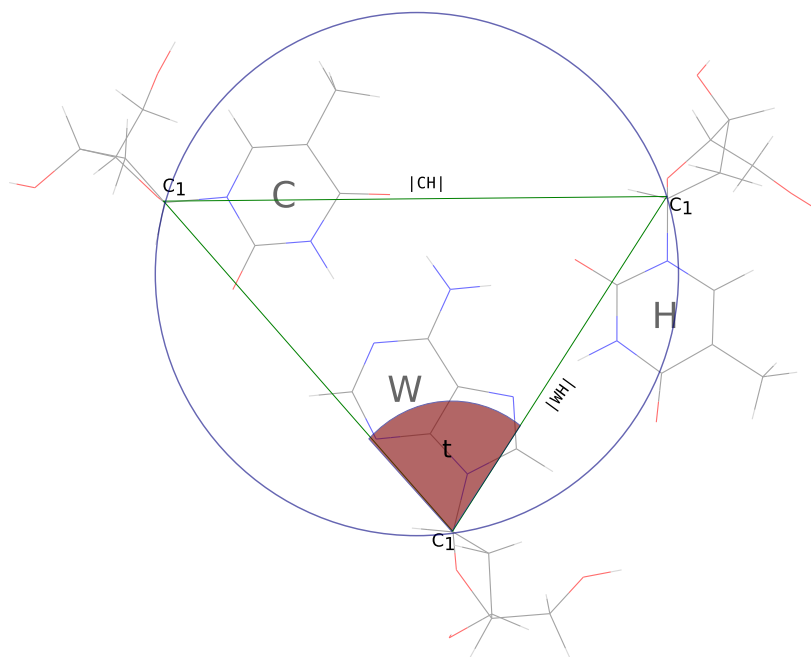


Figure 1: Illustration of parameters on the  $T \cdot A : T$  triplet

## 1.1 Calculated triplet parameters and groups

Antiparallel			Parallel		
	$t$ [°]	$r$ [Å]		$t$ [°]	$r$ [Å]
A.A:T	76.5364	7.409632	C.G:C	108.8662	8.897408
A.G:C	125.6857	11.9128	G.G:C	74.82808	7.161497
C.A:T	72.08654	5.563016	G.T:A	125.5032	12.28118
G.G:C	94.1352	7.961633	T.A:T	103.7168	7.896785
T.A:T	72.20278	6.379035	T.C:G	70.47479	6.469698
T.C:G	93.85905	7.441224	T.G:C	77.89392	6.630192

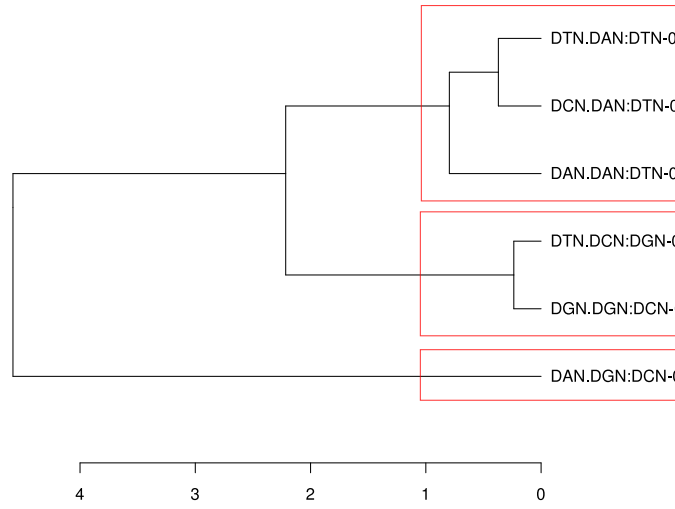


Figure 2: Groups for antiparallel triplets

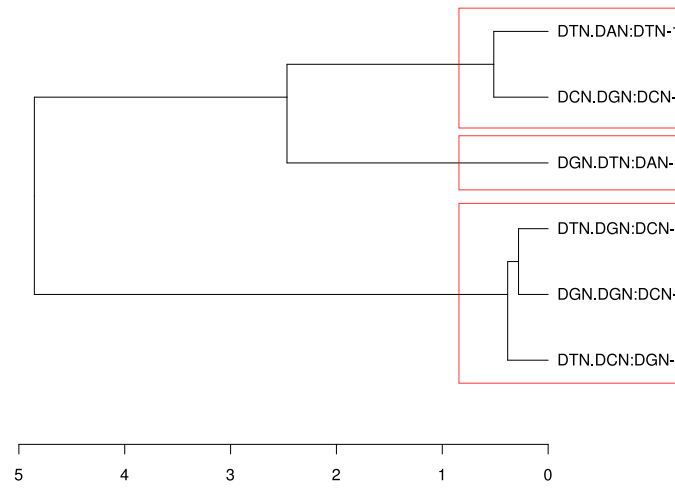


Figure 3: Groups for parallel triplets

## 2 Measurements

Structure 135D			Structure 149D		
$ CH $ [Å]	$ WH $ [Å]	$t$ [°]	$ CH $ [Å]	$ WH $ [Å]	$t$ [°]
11.357	9.986	70.4	14.421	8.527	97.8
14.282	11.064	81.8	14.705	8.503	100.2
14.168	11.241	82.8	14.919	8.947	100.4
12.011	9.528	75.0	14.479	9.631	92.4
14.094	11.132	80.7	14.908	8.713	102.6
14.014	11.598	78.5	14.951	8.660	101.1
11.902	9.629	72.7	14.267	8.548	94.3

Structure 1BCB			Structure 1D3X		
$ CH $ [Å]	$ WH $ [Å]	$t$ [°]	$ CH $ [Å]	$ WH $ [Å]	$t$ [°]
14.402	8.547	96.7	15.169	9.124	99.0
14.816	8.645	98.2	14.813	8.607	97.6
14.518	8.343	99.3	14.164	8.850	89.5
14.968	8.169	102.0	13.793	8.902	88.6
14.474	8.222	99.8	14.691	8.949	98.6
14.810	8.442	100.0	14.909	8.922	97.6
			14.406	8.929	93.7
			15.092	8.667	102.9