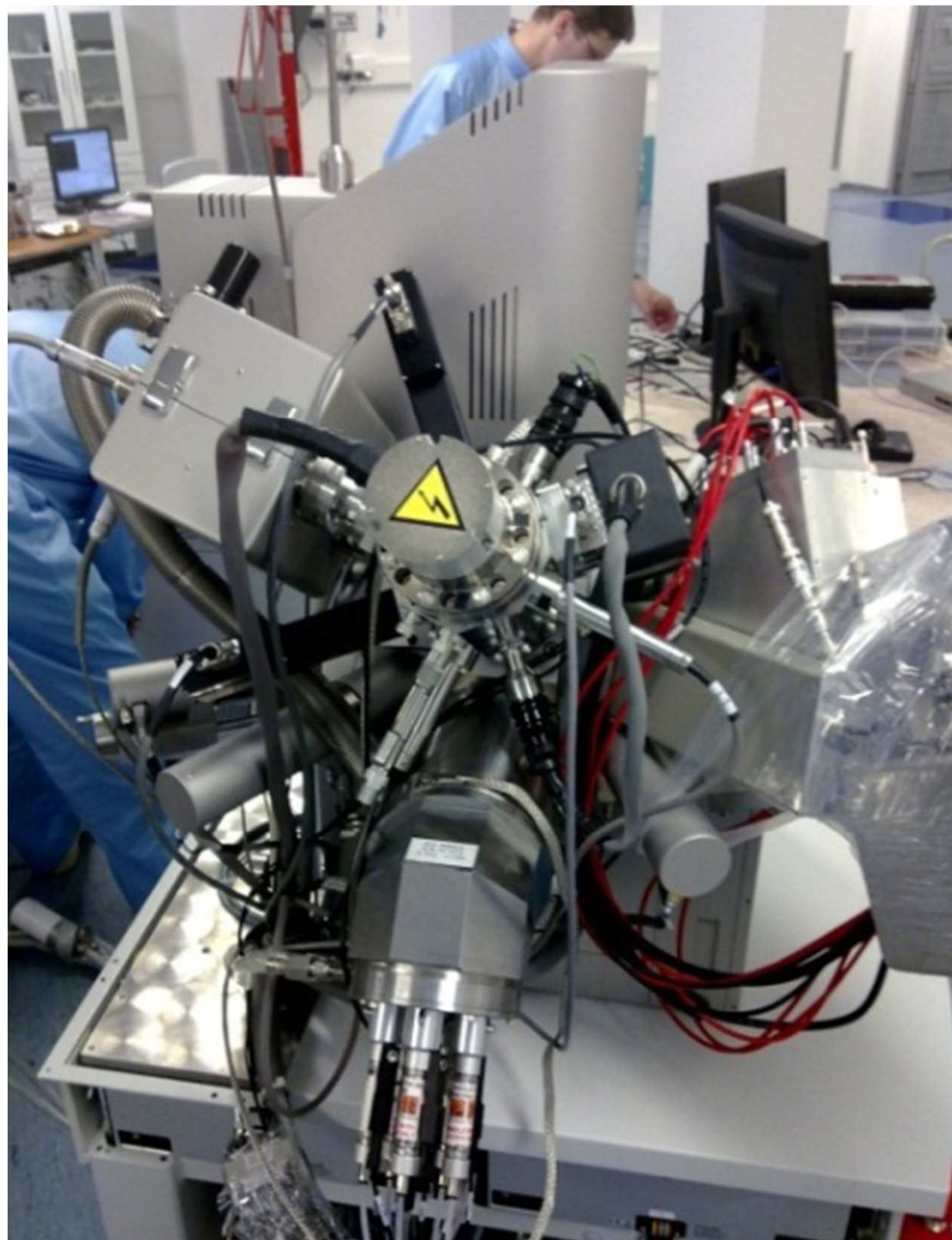




TESCAN
PERFORMANCE IN NANOSPACE









VEGA3
SEM



od 1999

MIRA3
FEG-SEM



od 2005

VELA3
FIB-SEM



od 2007

LYRA3
FIB-FESEM



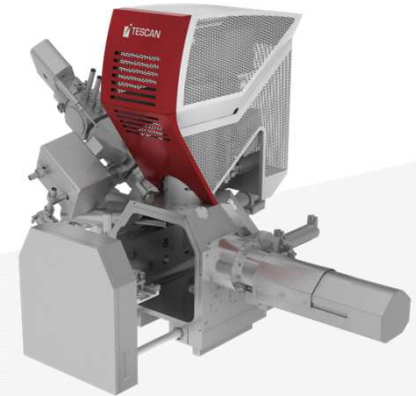
od 2008

InduSEM



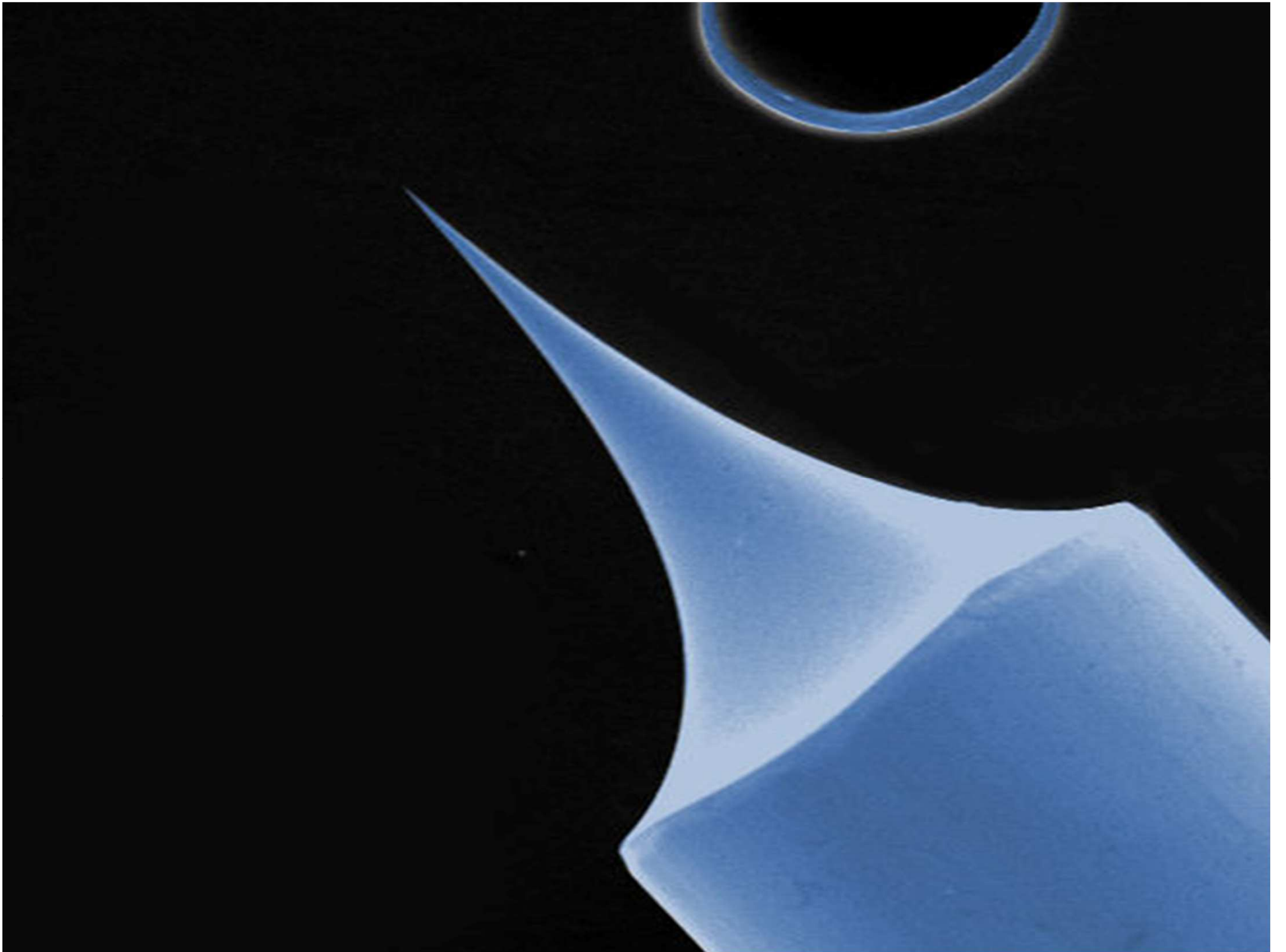
od 2009

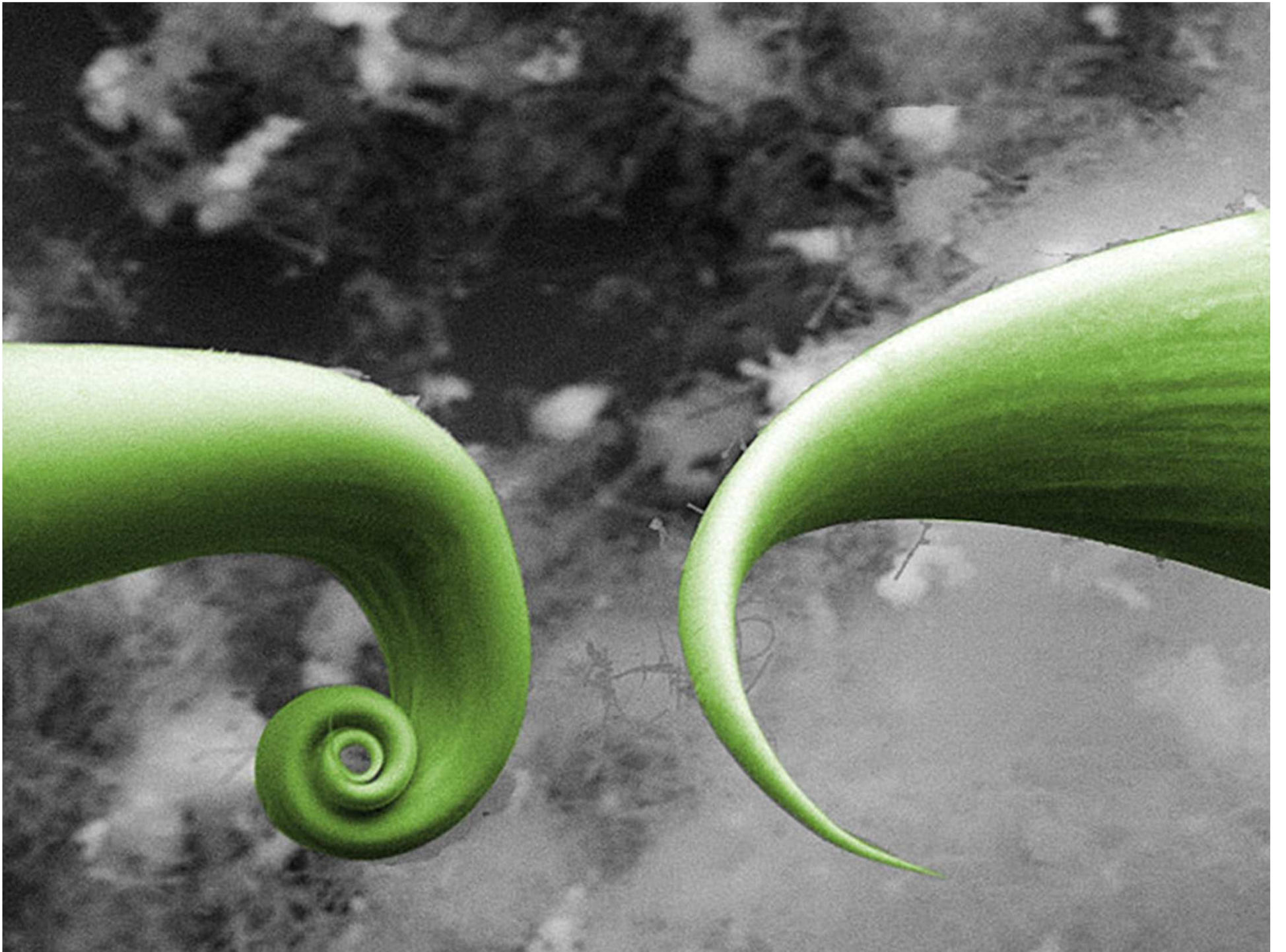
FERA3

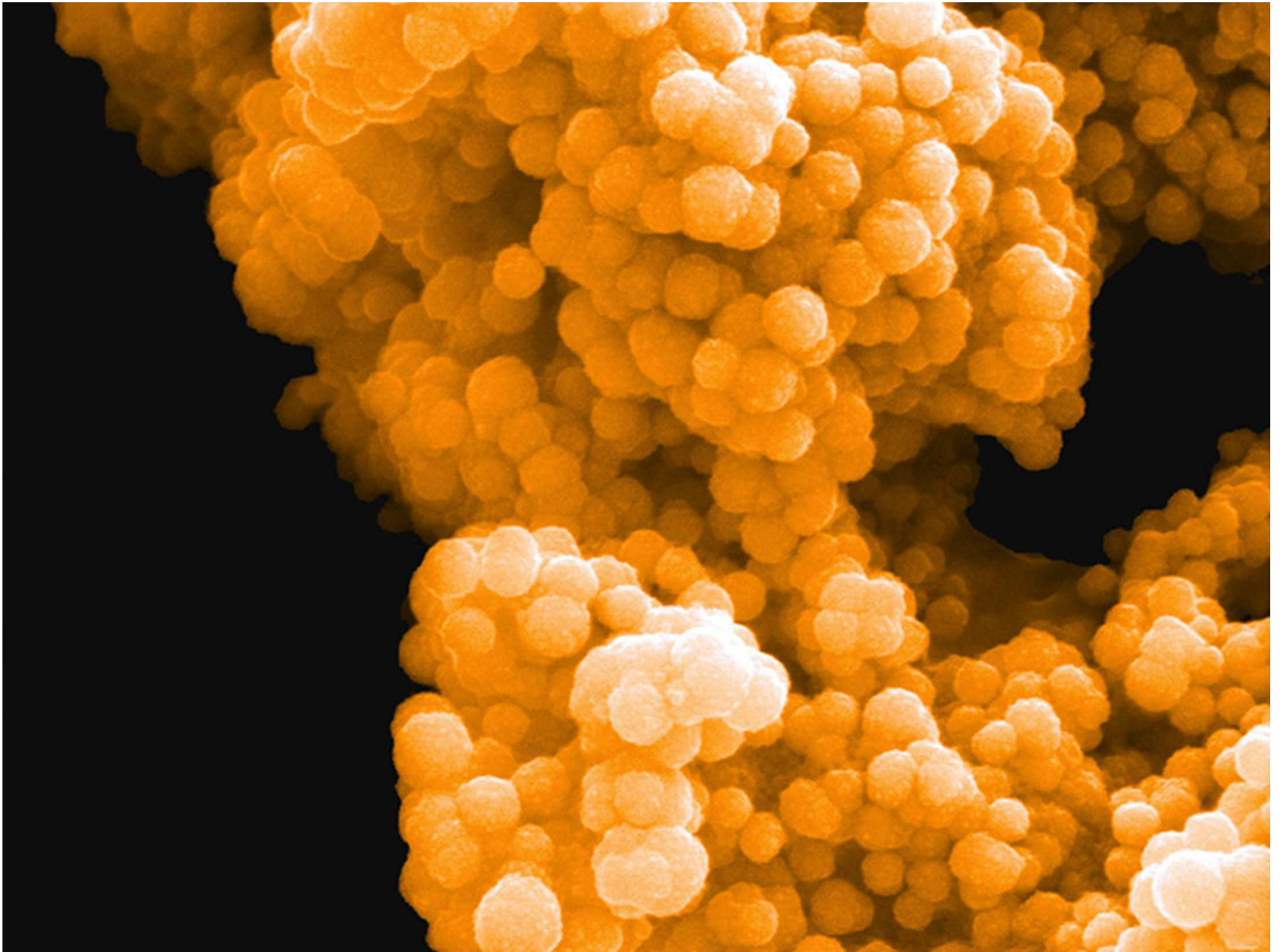


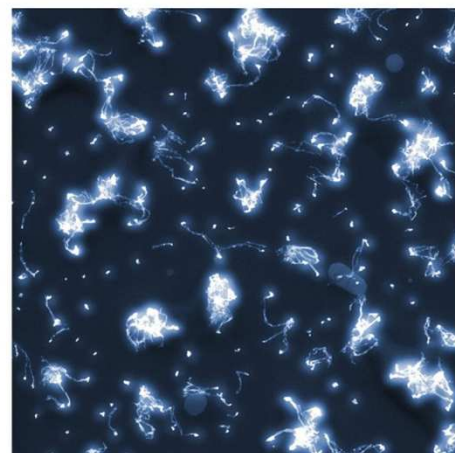
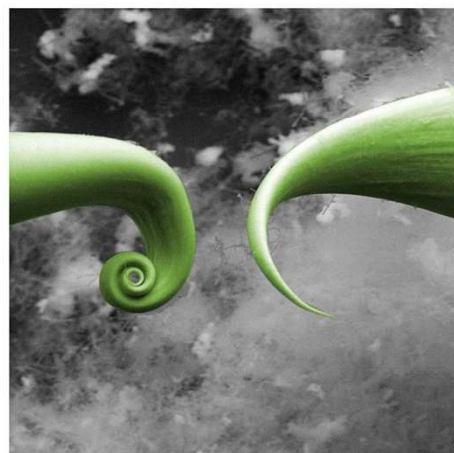
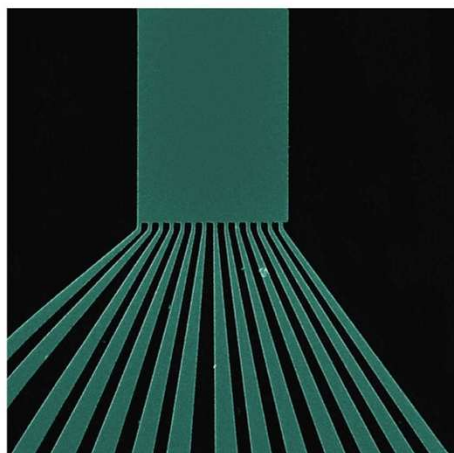
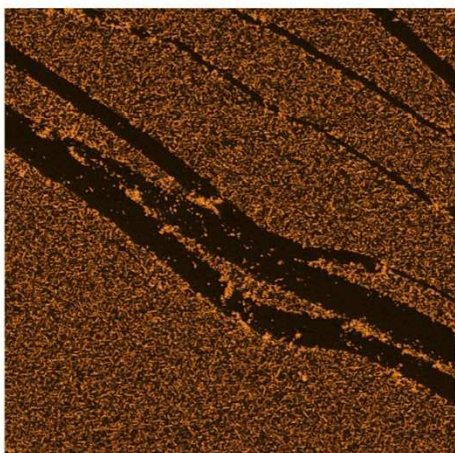
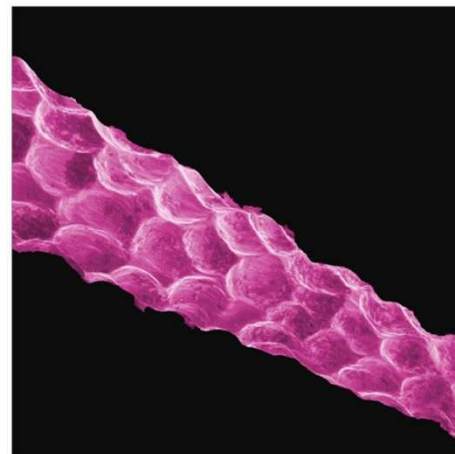
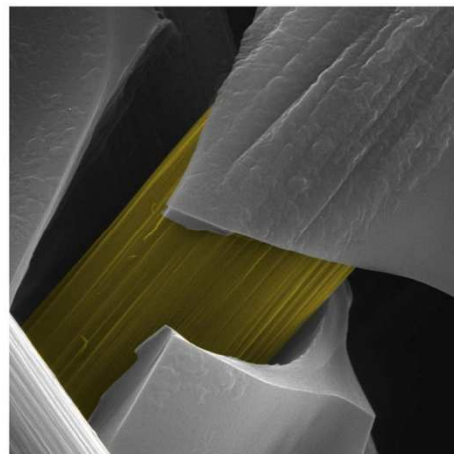
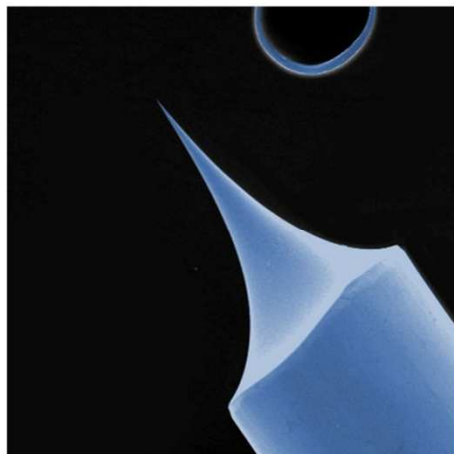
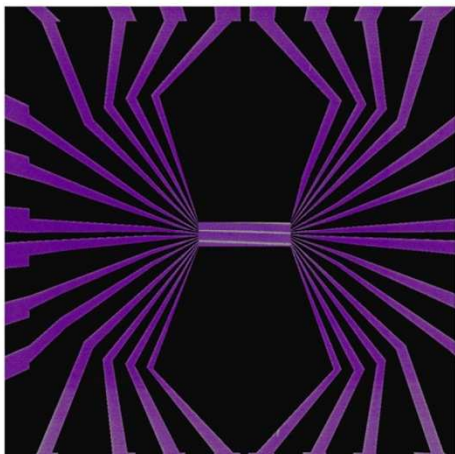
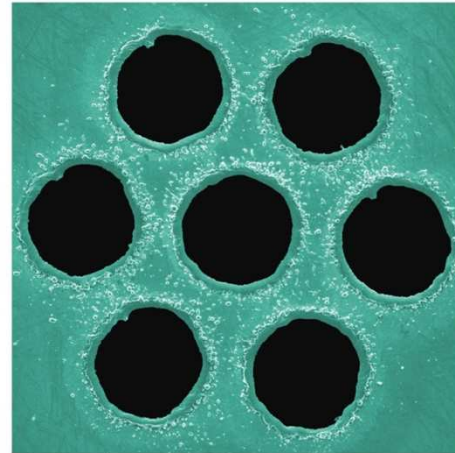
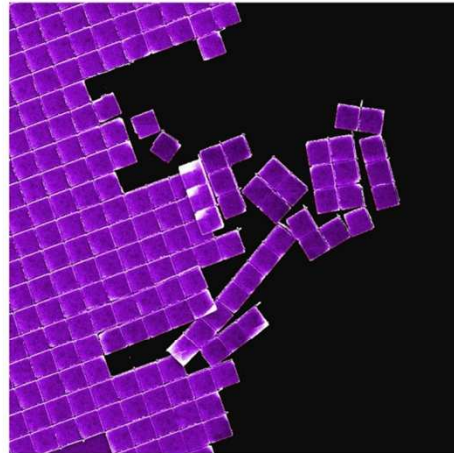
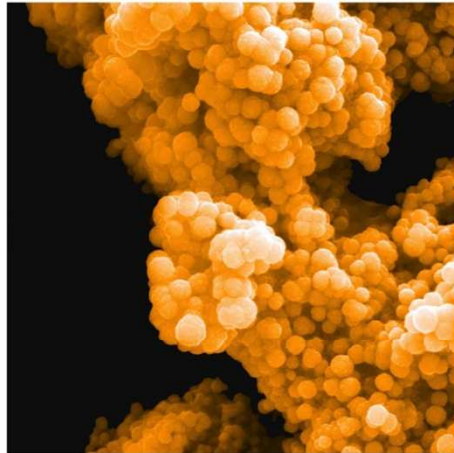
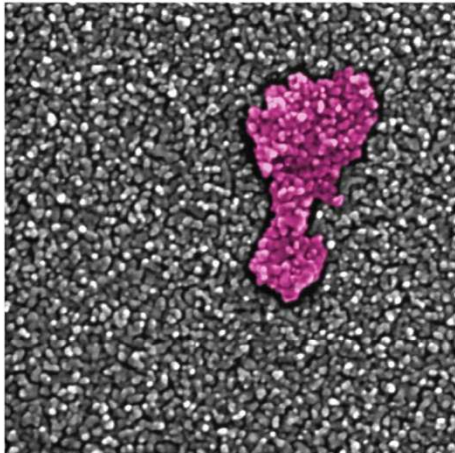
od 2012

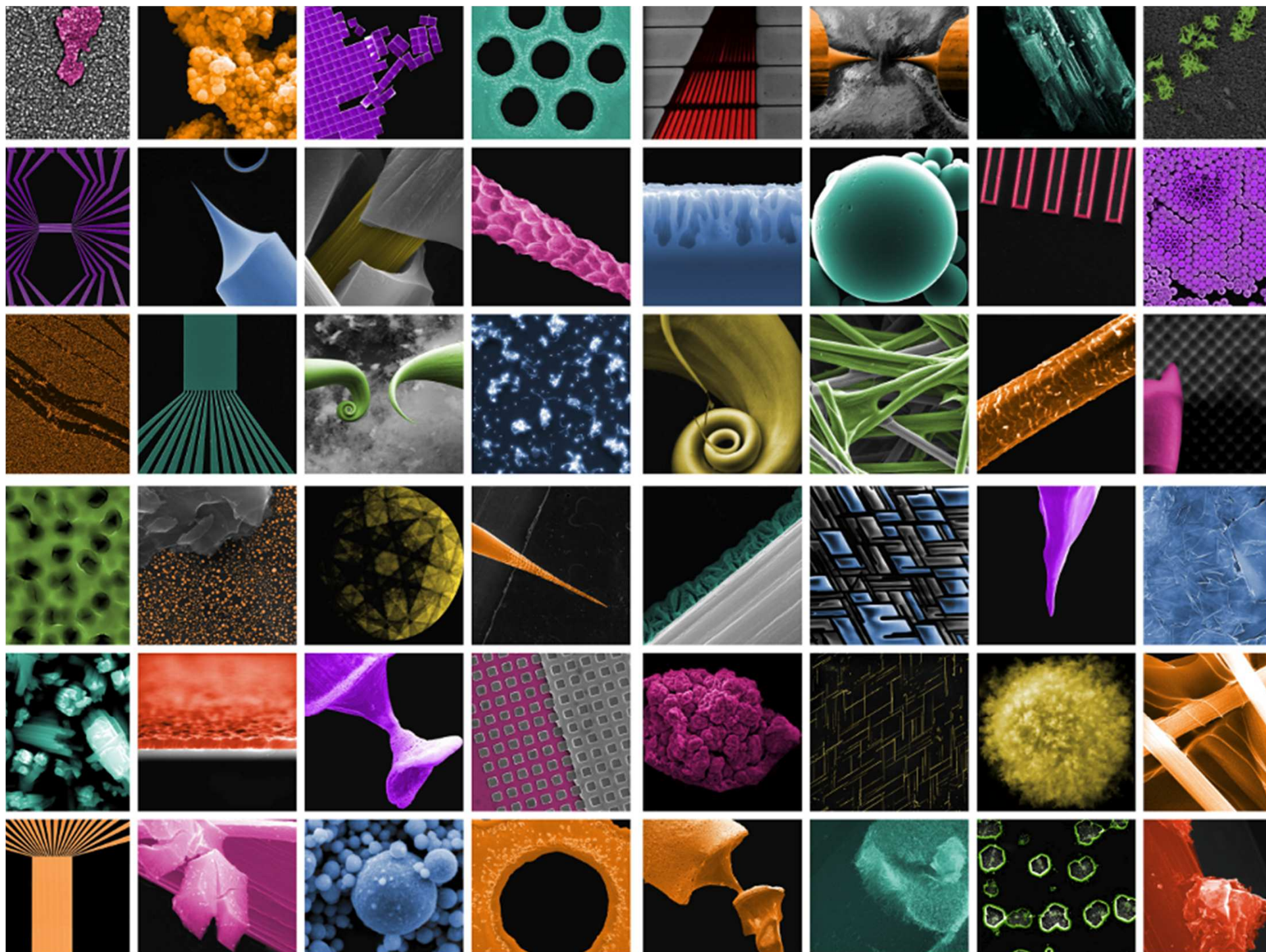


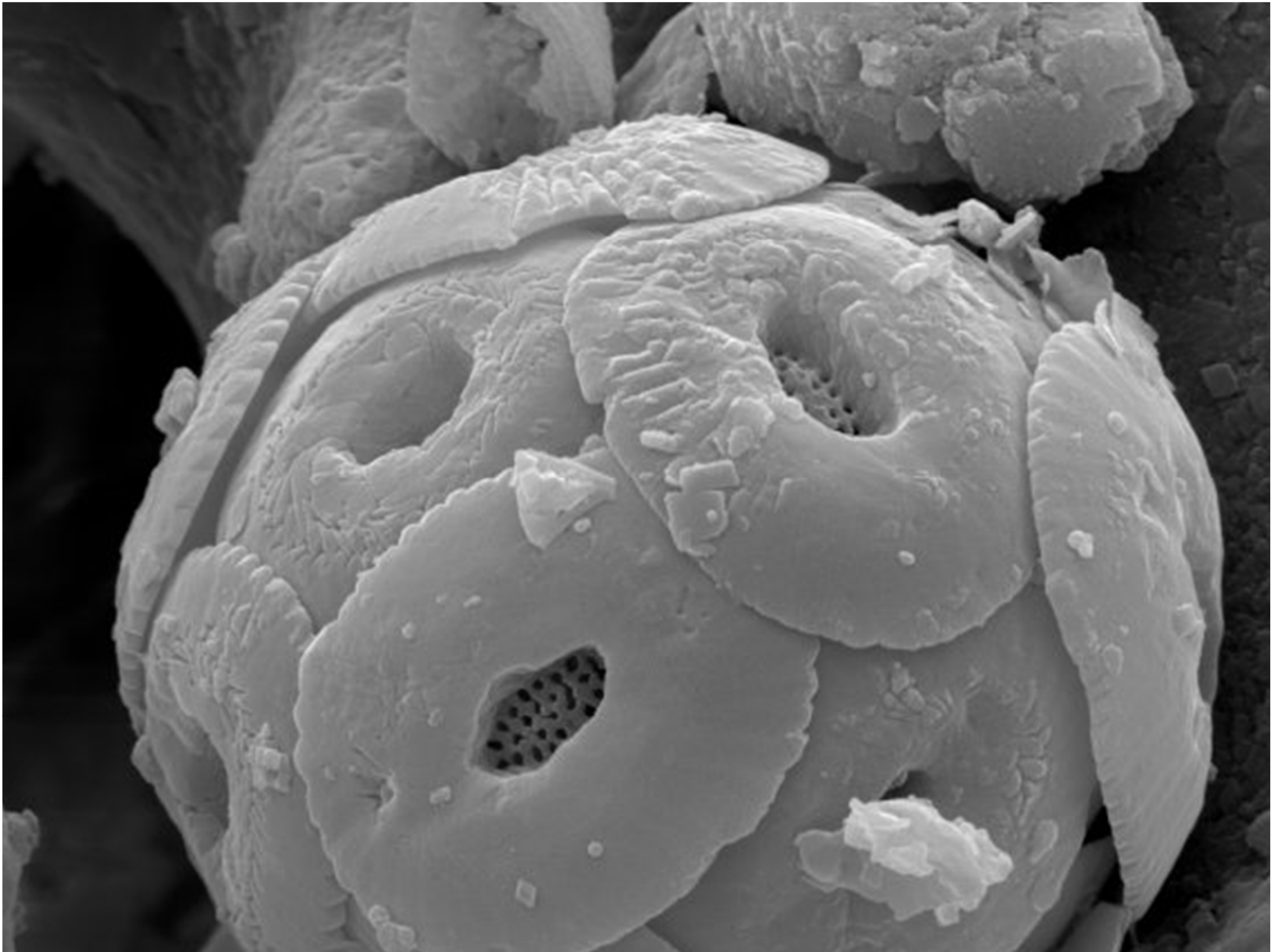


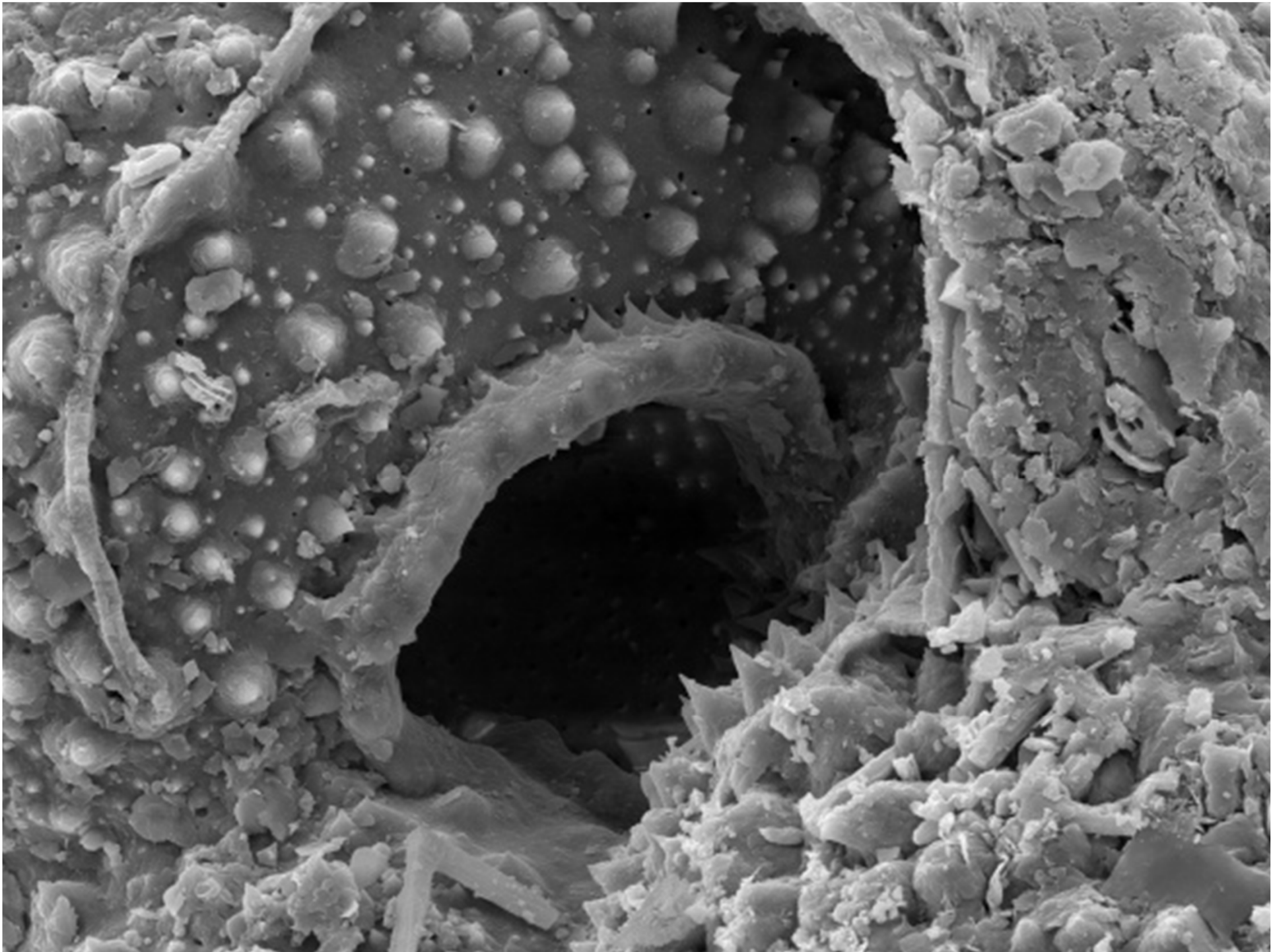




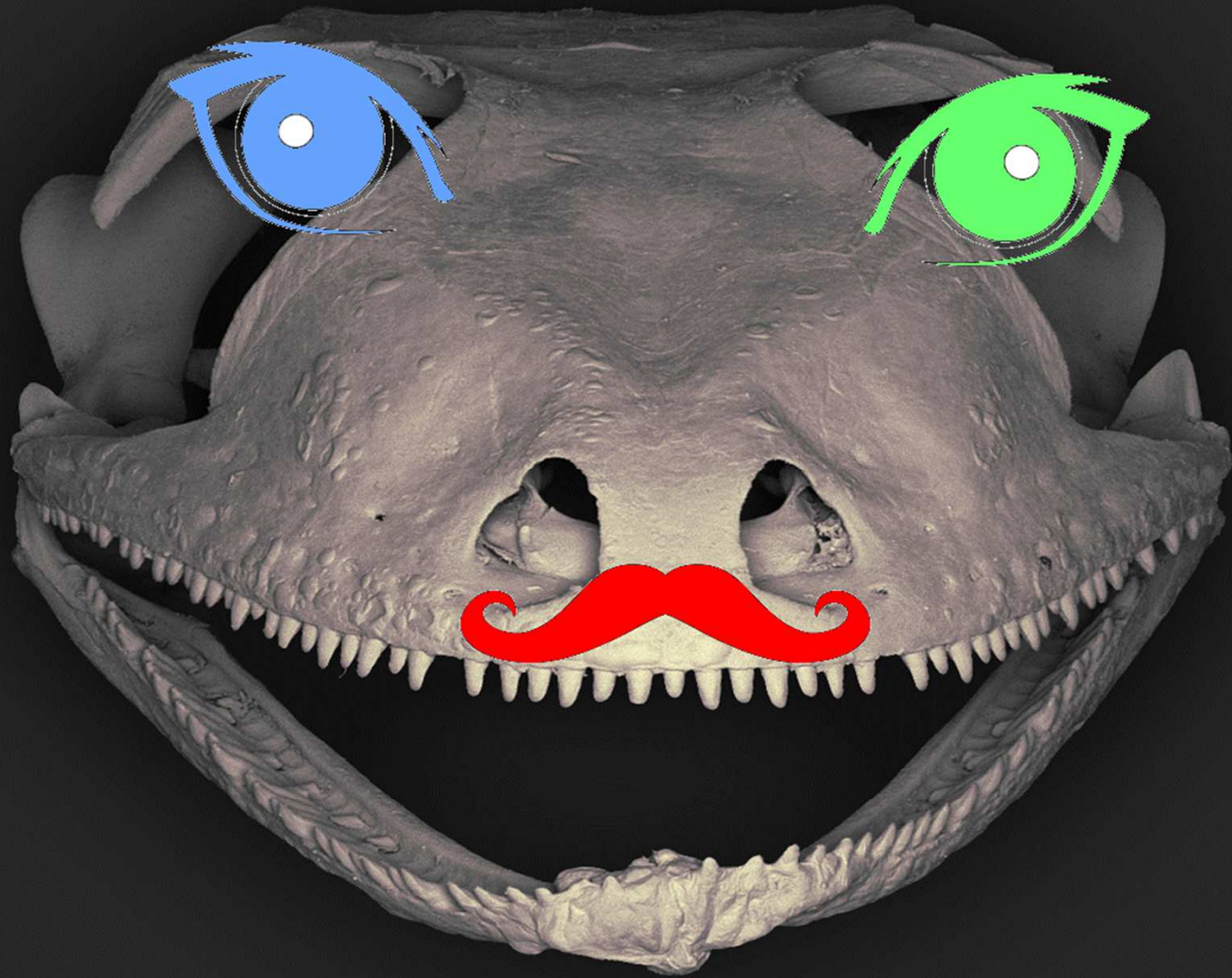














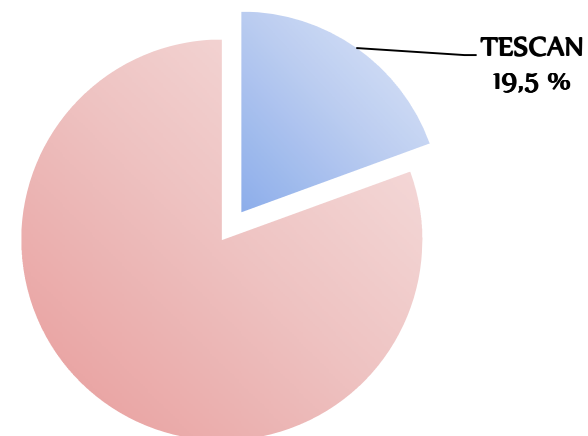
JEOL

HITACHI

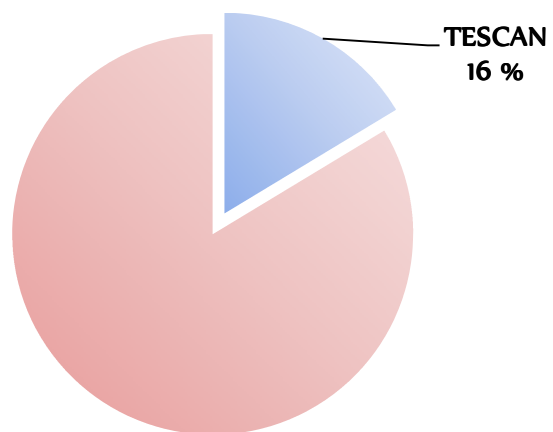




Tržní podíl v USA (VEGA)

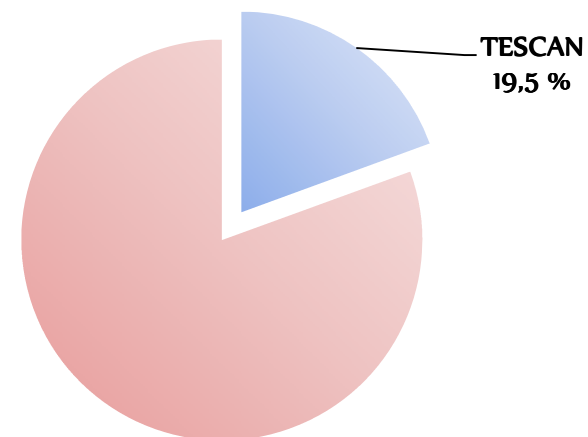


Tržní podíl v USA (VEGA, MIRA, LYRA)

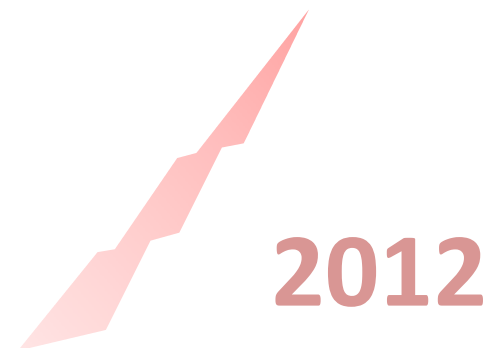
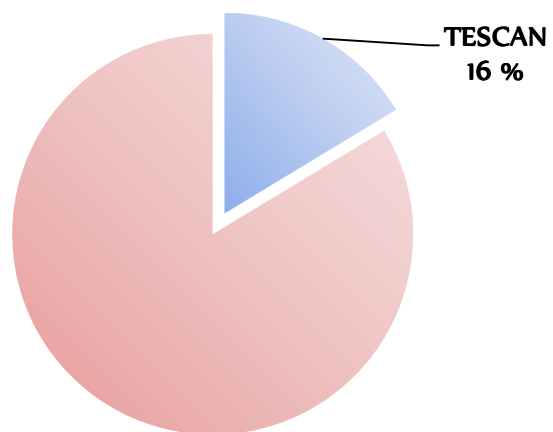




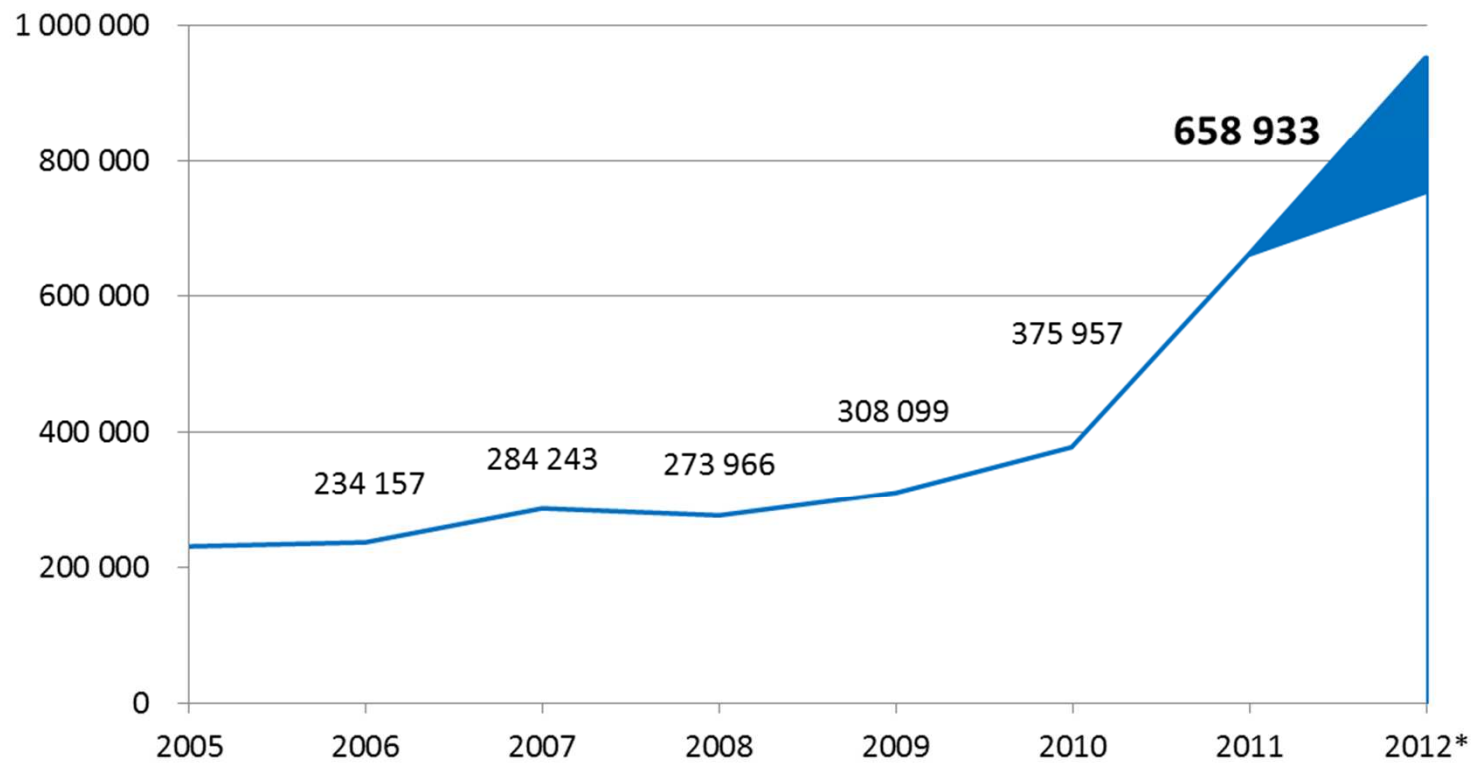
Tržní podíl v USA (VEGA)



Tržní podíl v USA (VEGA, MIRA, LYRA)

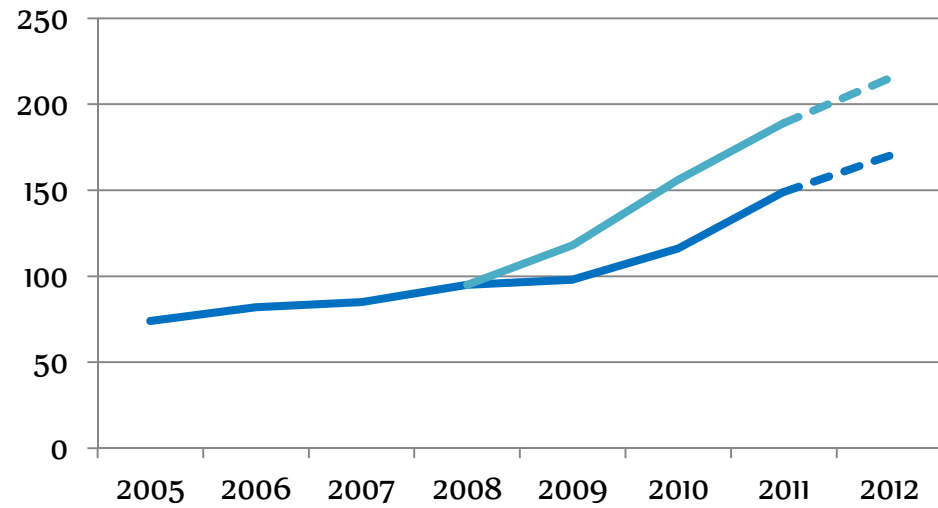


Tržby společnosti TESCOAN (tis. Kč)

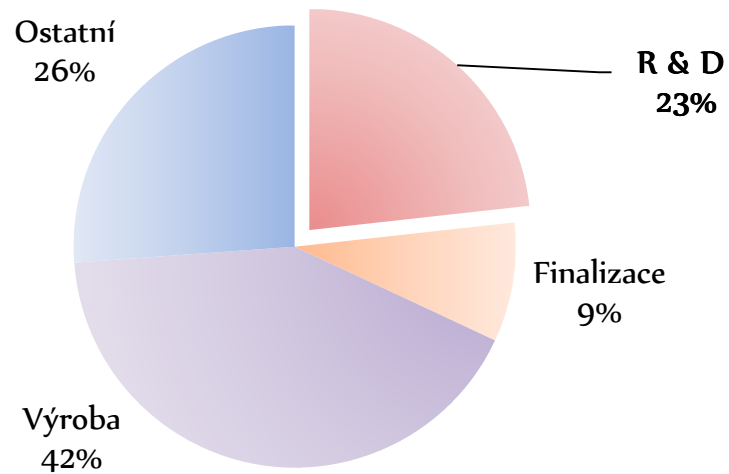




Počet zaměstnanců TESCANAu



Struktura zaměstnanců





Pro Vás

- Dlouhodobě perspektivní práce

Vývojový pracovník – SW

Vývojový pracovník – HW

- Diplomové a bakalářské práce – zpracování obrazu

Kontaktní osoba FI MU – **RNDr. Pavel Matula, Ph.D.**

- Diplomová práce – Možnosti řešení ERP a systémové integrace



Pro Vás

- Dlouhodobě perspektivní práce

Vývojový pracovník – SW

Vývojový pracovník – HW

- Diplomové a bakalářské práce – zpracování obrazu

Kontaktní osoba FI MU – RNDr. Pavel Matula, Ph.D.

\$

- Diplomová práce – Možnosti řešení ERP a systémové integrace















