



# Konica Minolta Business Solutions Czech, s.r.o.

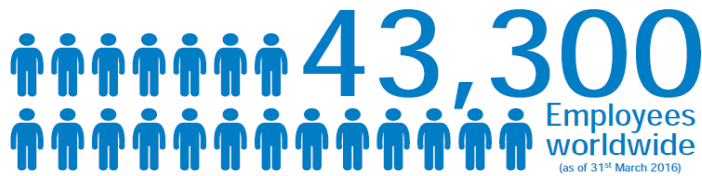
23. Listopad 2017

**Ferdinand Urban, Senior R&D Engineer**

# Konica Minolta Business Solutions



## FACTS & FIGURES KONICA MINOLTA



**1873** Rokusaburo Sugiura sets the starting point of the business of Konica Corporation

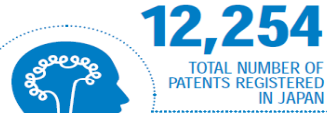
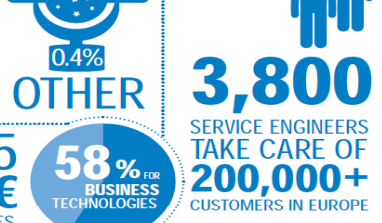
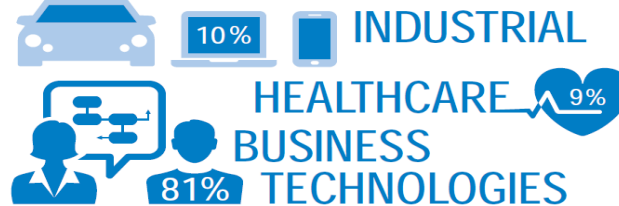


Ranks **NUMBER 1** in terms of market share for **Production Printing (32.3%)** and **Office Colour A3 (21.5%)** in Europe (Infosource CY2015)

Konica Minolta is signatory of the 10 principals to the **United Nations Global Compact**

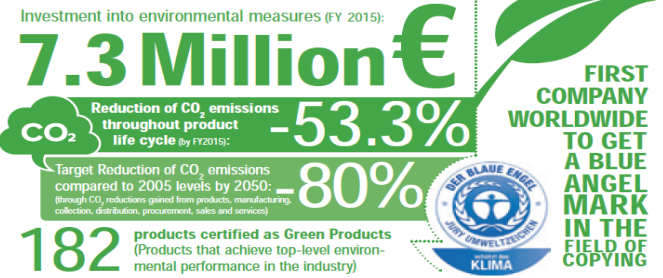
**1928** Kazuo Tashima launches production of cameras in Japan and sets the starting point for Minolta Co., Ltd.

### KONICA MINOLTA BUSINESS AREAS



**2016** **5 BUSINESS INNOVATION CENTRES WORLDWIDE**

SILICON VALLEY  
LONDON  
TOKYO  
SINGAPORE  
SHANGHAI

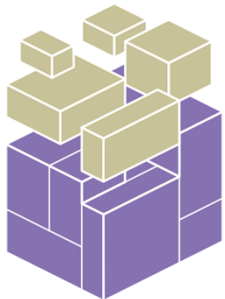




Computer Vision  
& Machine Learning



Internet of Things



Semantic Platform



Data Analytics



Human  
Computer  
Interaction

# Computer Vision & Machine Learning

- Zpracování obrazu
- Detekce předmětů, osob, obličejů
- Pochopení kontextu





# Internet Of Things

- Snímání informací o věcech a prostředí
- Přenos dat pomocí vlastní sítě LoRaWAN
- Analýza a update ERP systémů

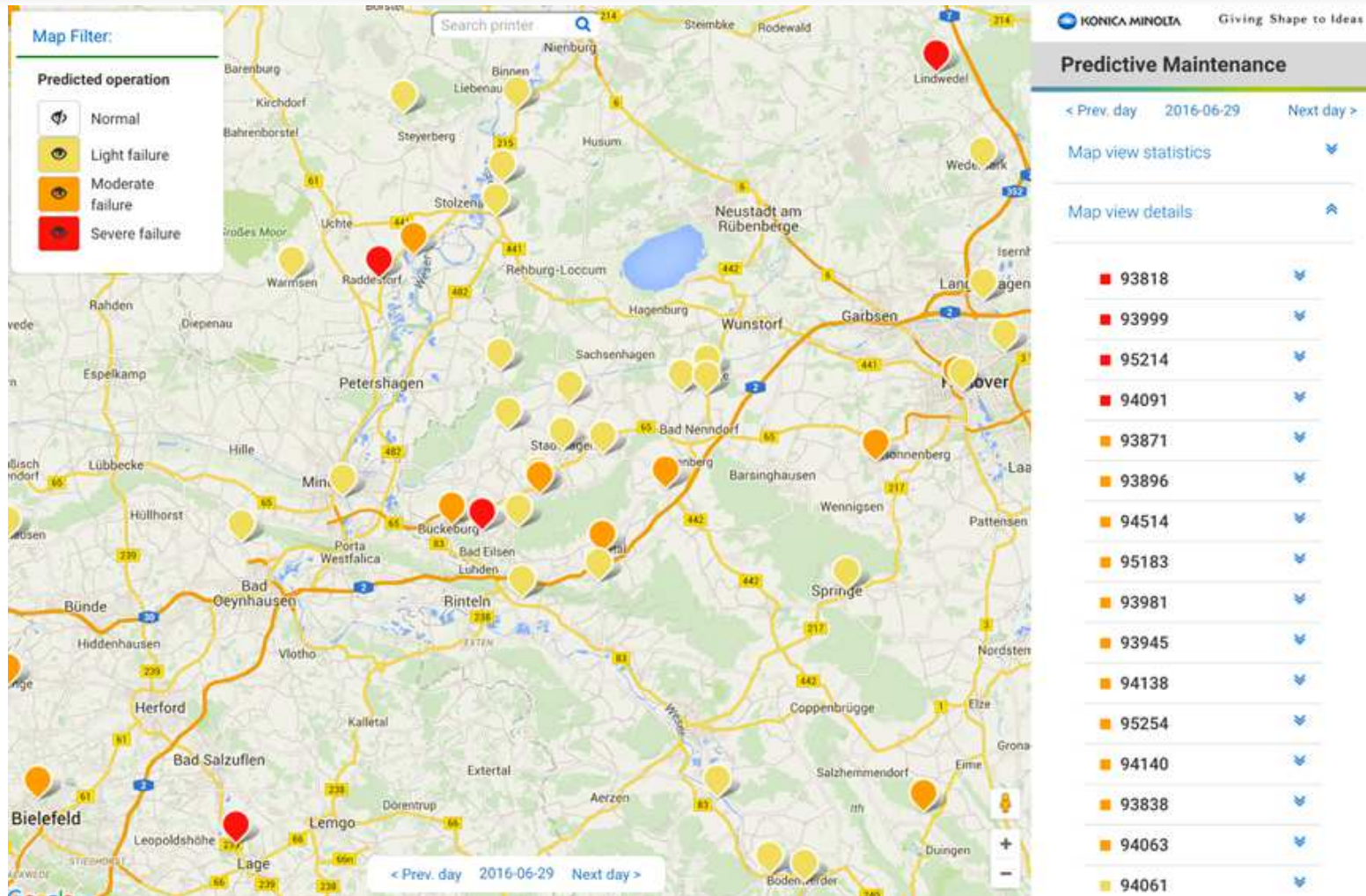


# Semantic Technologies & Data Analytics

- Document understanding
- Modeling digital and physical workspace
- Process mining
- Predictive maintenance



# Predictive Maintenance

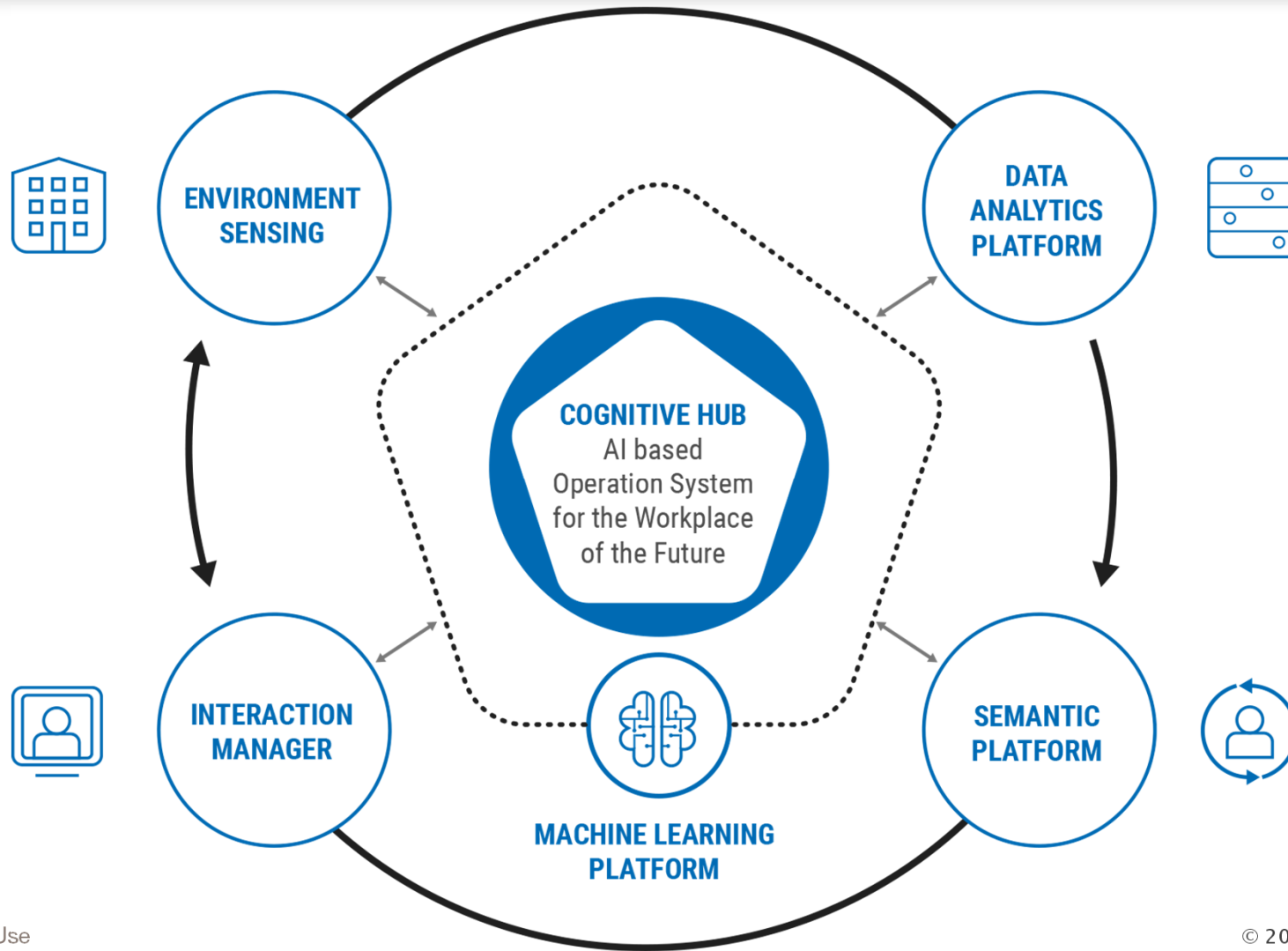


# Human Computer Interactions

- Návrh a optimalizace UI/UX
- Pomoc při návrhu Next Gen features
- Design inovativních řešení

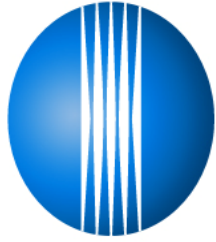
...ale proč?





# Spolupráce s MUNI

- **Laboratory of Data Intensive Systems and Applications (DISA)**  
Approximate Similarity Retrieval Based on Sketches
- **Natural Language Processing Centre**  
Application of NLP Technology for Semantic Understanding of Text Documents
- **Human Computer Interaction Laboratory**  
Application of Virtual Reality in Office Environment



**KONICA MINOLTA**