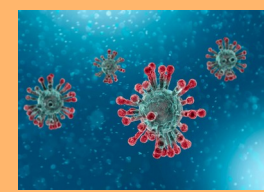
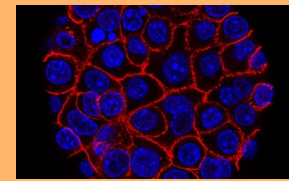
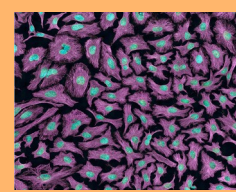
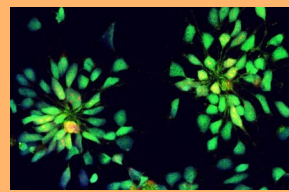
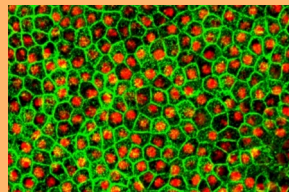
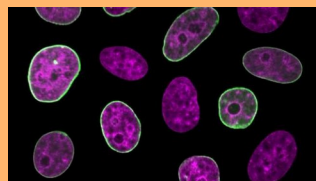
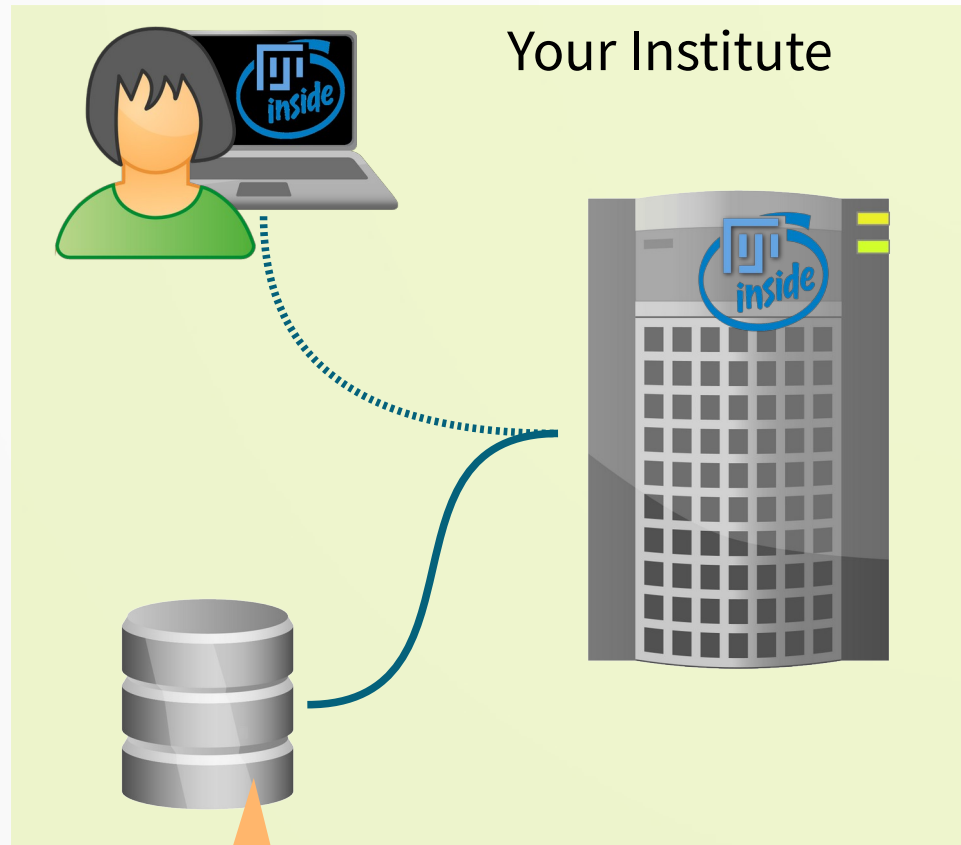


# Introduction and Agenda

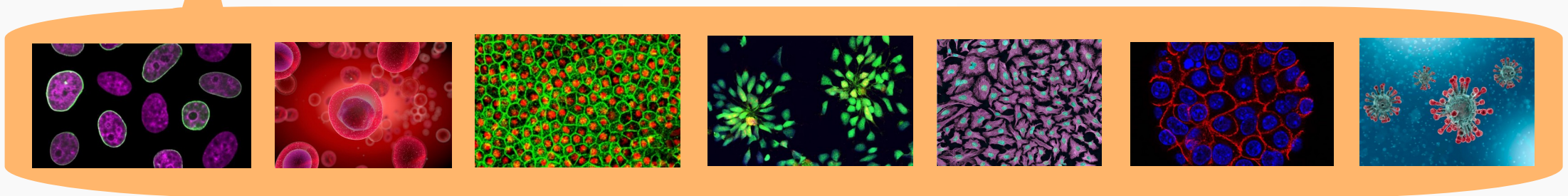
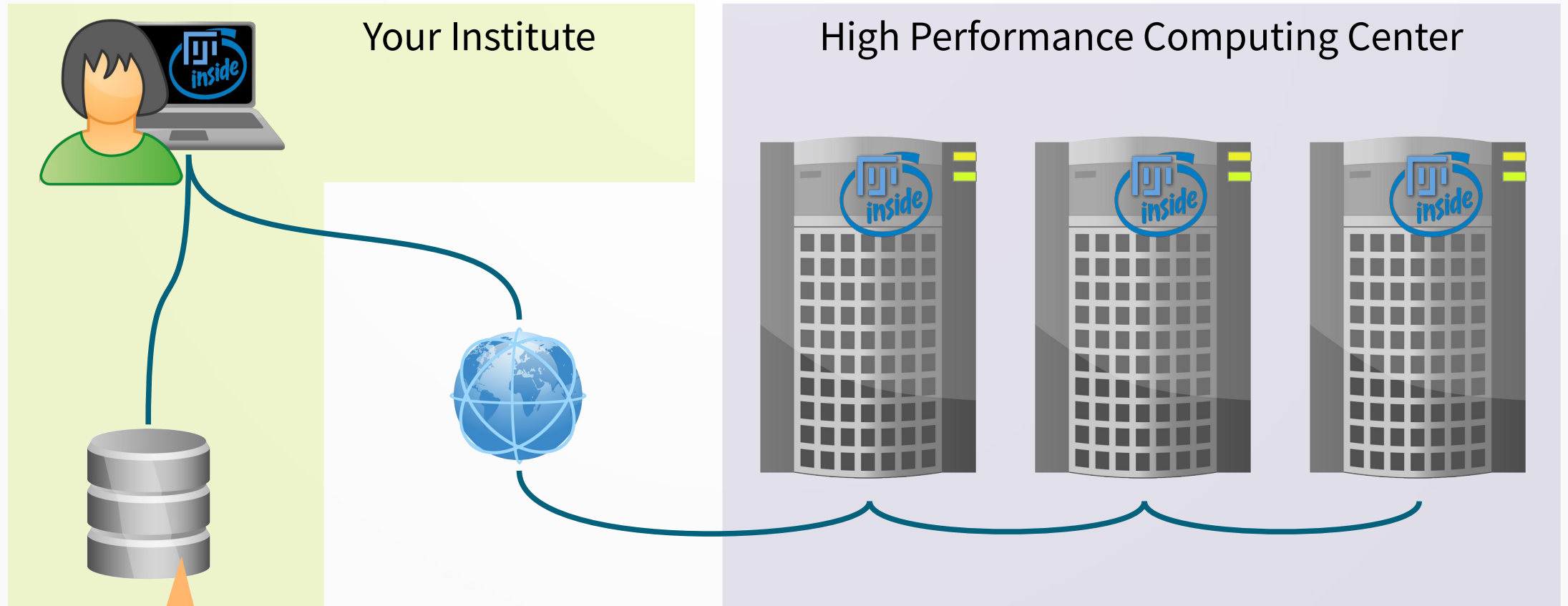
**by**

**Stefanos, Vlado, Daniel & Michal**

# Grand scheme of things



# Grand scheme of things



# Grand scheme of things

HPC is:

- Huge computing power
- Expensive toy
  - Complicated Access
  - Rules, Fair Using Policy
  - Jobs, Planning

Outline:

- 1) Obtain access keys
- 2) Setup access profile
- 3) Manage jobs
- 4) Write “parallel macros”

